



INDOFINE Chemical Company, Inc.

121 Stryker Lane, Bldg. 30, Suite 1 • Hillsborough, NJ 08844 • U.S.A.

Phone: (908) 359-6778 • FAX: (908) 359-1179

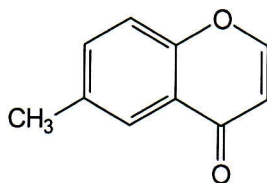
website: www.indofinechemical.com

e-mail: chemical@indofinechemical.com

CERTIFICATE OF ANALYSIS

Cat No.: 19-147

<u>Product:</u>	6-METHYLCHROMONE
<u>CAS No.:</u>	[38445-23-7]
<u>Lot Number:</u>	0609088
<u>Molecular Formula:</u>	C ₁₀ H ₈ O ₂
<u>M.W.:</u>	160.17
<u>Melting Point:</u>	85-86.5°C
<u>Appearance:</u>	Off white fluffy powder
<u>TLC:</u>	Benzene:Ethyl acetate (9:1)
<u>Solubility:</u>	Soluble in chloroform
<u>Purity(HPLC):</u>	99.7%





INDOFINE Chemical Company, Inc.

121 Stryker Lane, Bldg. 30, Suite 1 • Hillsborough, NJ 08844 • U.S.A.

Phone: (908) 359-6778 • FAX: (908) 359-1179

website: www.indofinechemical.com

e-mail: chemical@indofinechemical.com

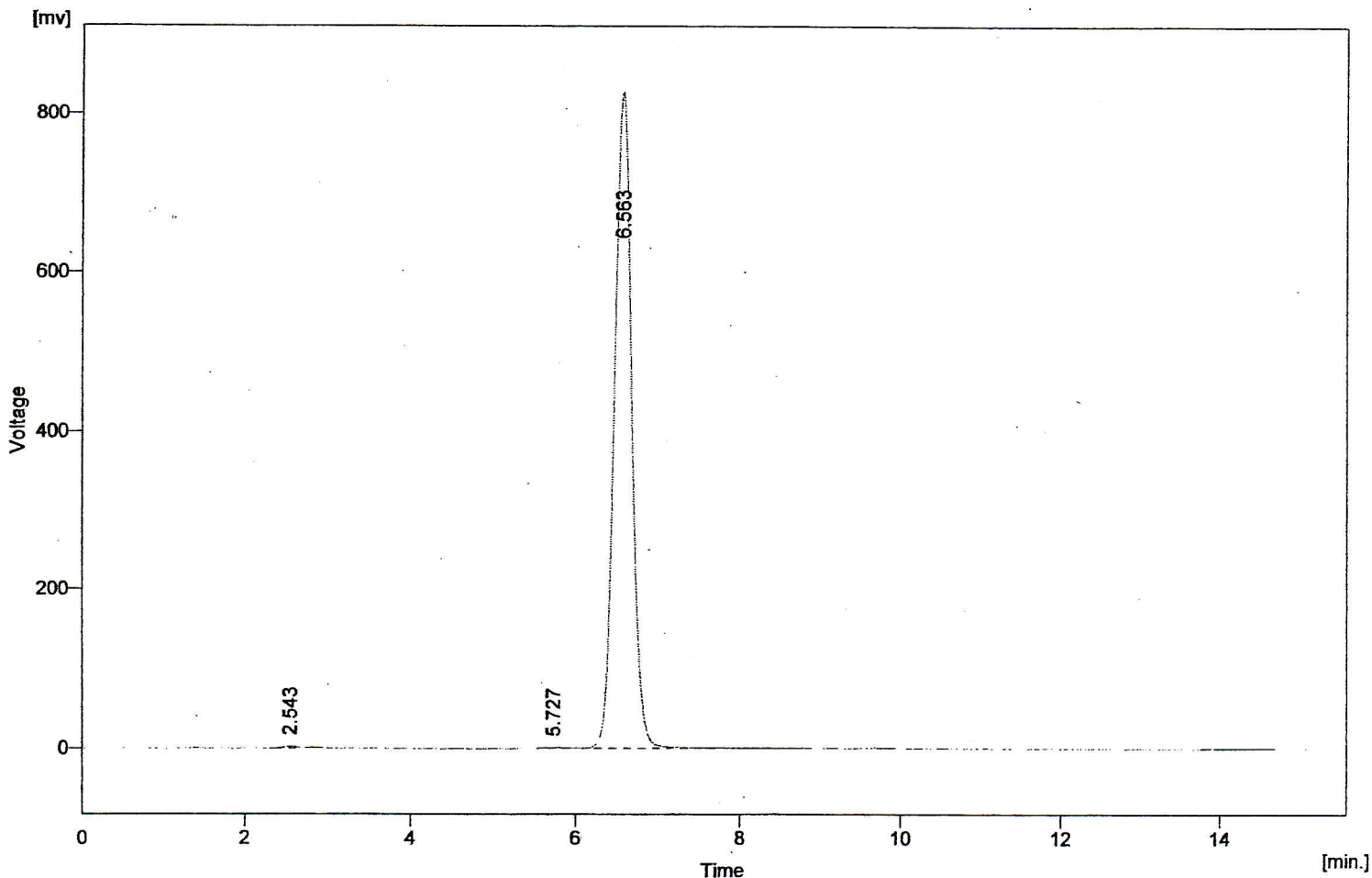
HPLC ANALYSIS

Catalog No.: 19-147
Product name: 6-Methylchromone
Lot No.: 0609088

Sample Info:

Sample ID : NP-SPL
Sample : 6-METHYLCROMONE
Inj. Volume [ml] : 0.02

Amount : 0
ISTD Amount : 0
Dilution : 1



Result Table (Uncal - E:HPLCWP-SPL25091)

	Reten. Time [min]	Area [mV.s]	Height [mV]	Area [%]
1	2.543	23.515	2.088	0.2
2	5.727	14.421	0.891	0.1
3	6.563	11717.932	827.082	99.7
	Total	11755.868	830.061	100.0

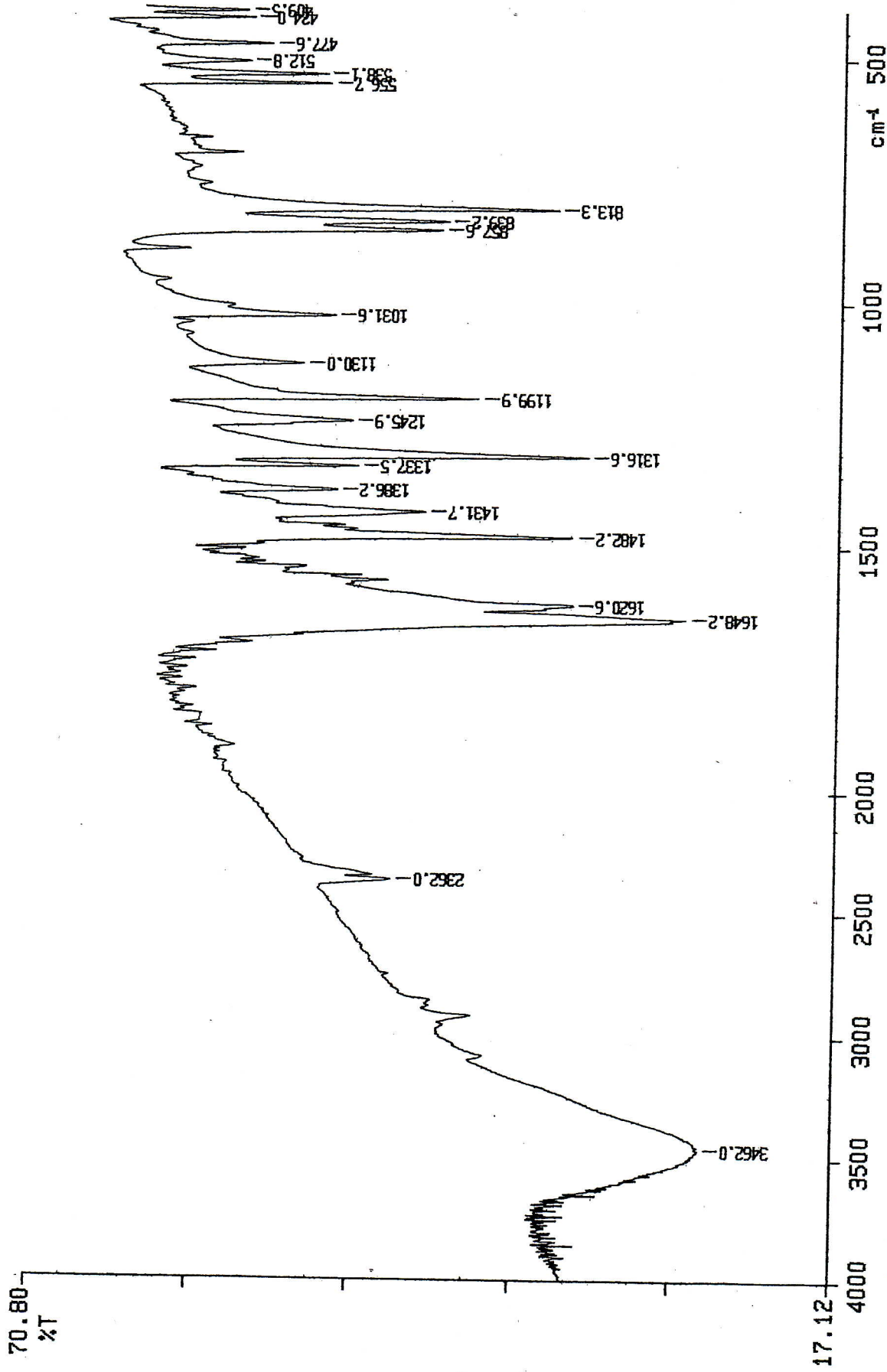
Mobile phase : Methanol + Water (70+30), Wave length : 254nm,
Column : C₁₈ (250X4.6mm), Flow rate : 1ml/min



INDOFINE Chemical Company, Inc.
121 STRYKER LANE
BLDG. 30, SUITE 1
HILLSBOROUGH, NJ 08844

PERKIN ELMER

Catalog No.: 19-147
Product name: 6-Methylchromone
Lot No.: 0609088



Y: 1 scan, 4.0cm-1
6-METHYL CHROMONE



INDOFINE Chemical Company, Inc.
121 STRYKER LANE
BLDG. 30, SUITE 1
HILLSBOROUGH, NJ 08844

Catalog No.: 19-147
Product name: 6-Methylchromone
Lot No.: 0609088

